

NOW LEASING



6366 GUILFORD AVENUE
BROAD RIPPLE VILLAGE
INDIANAPOLIS, IN 46220

Newly Renovated Inside + Outside!

6366



GERSHMAN
PARTNERS

www.gershmanpartners.com

UP TO



8,616 SF

AVAILABLE FOR LEASE

(317) 599-4800



GERSHMAN
PARTNERS

350 Massachusetts Avenue, Suite 400 | Indianapolis, IN 46204
317.599.4800 | www.gershmanpartners.com

> **Leasing Inquiries:**

Meghan DeMars Kiger | mkiger@gershmanpartners.com

± 8,616 SF

AVAILABLE FOR LEASE

2,872 SF / FLOOR

BUILT IN 1964

3-STORIES

ON-SITE PARKING

**WITHIN MINUTES TO THE
INDYGO RED LINE**

**WITHIN MINUTES TO
DOWNTOWN INDY**

**WITHIN MINUTES TO THE
FASHION MALL AT KEYSTONE**

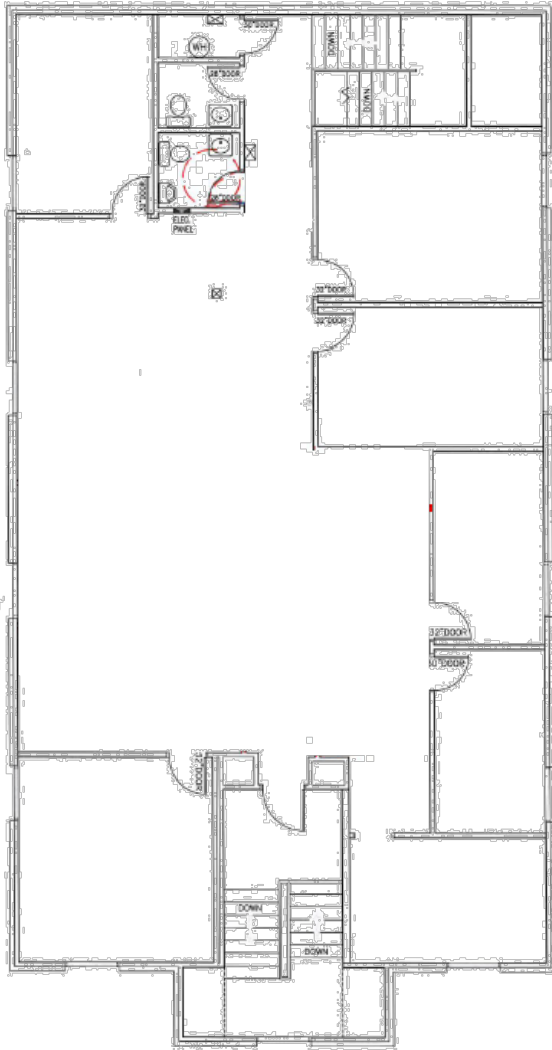


**6366 GUILFORD AVENUE
BROAD RIPPLE VILLAGE
INDIANAPOLIS, IN 46220**

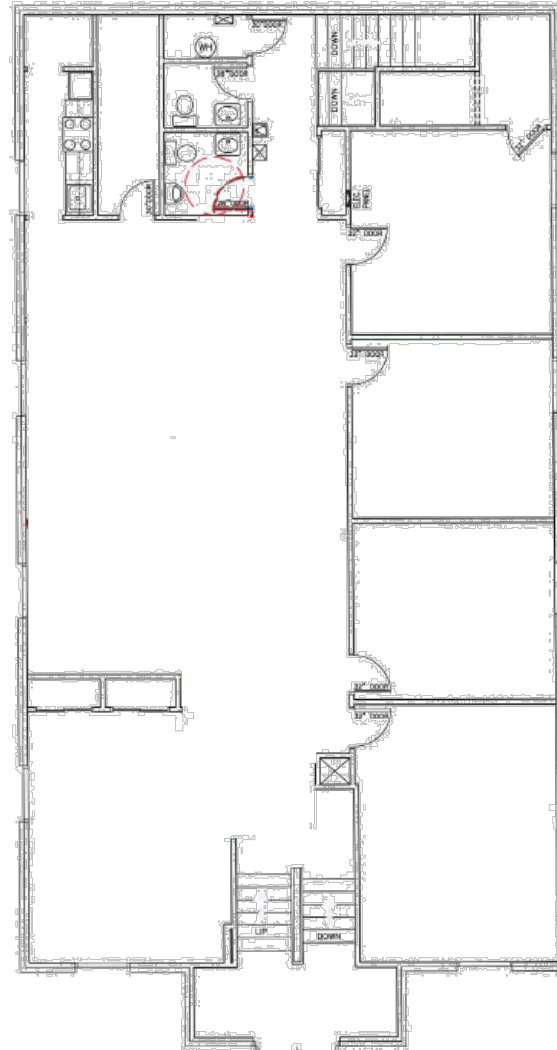


FLOOR PLANS

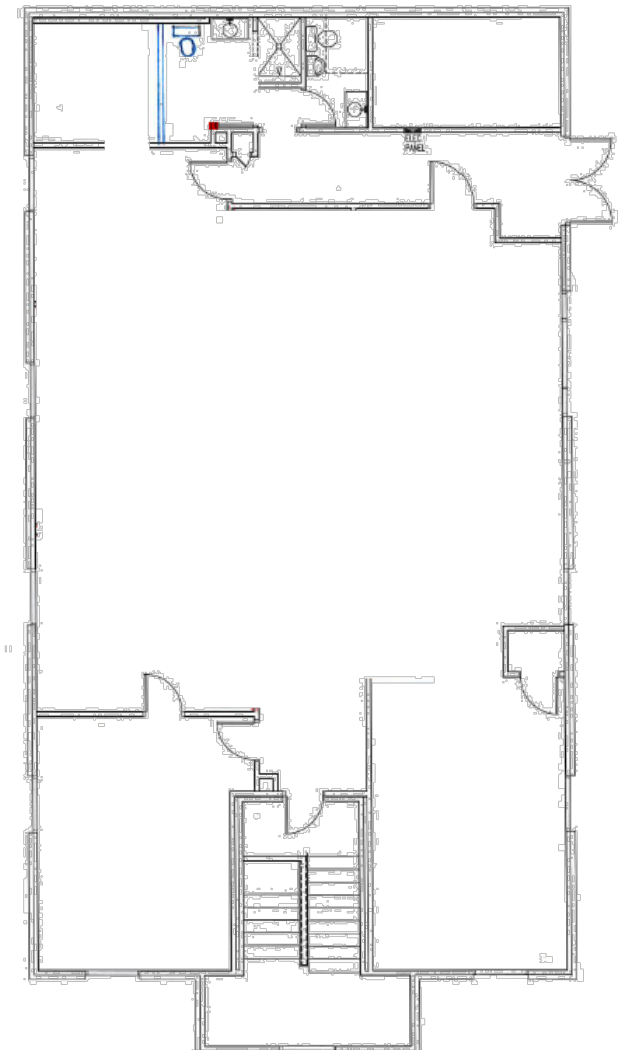
 **6366 GUILFORD AVENUE**
BROAD RIPPLE VILLAGE
INDIANAPOLIS, IN 46220



SECOND FLOOR



FIRST FLOOR



LOWER LEVEL

Keystone Fashion Mall 4.5 miles

BROAD RIPPLE VILLAGE NEIGHBORHOOD OVERVIEW

6366 GUILFORD AVENUE
BROAD RIPPLE VILLAGE
INDIANAPOLIS, IN 46220



GERSHMAN PARTNERS 350 Massachusetts Avenue, Suite 400 | Indianapolis, IN 46204
317.599.4800 | www.gershmanpartners.com

> Leasing Inquiries:
Meghan DeMars Kiger | mkiger@gershmanpartners.com

Glendale Town Center 1 mile